



BUSINESS PROFILE

1 Executive Summary

2 Our Vision, Our Purpose and Objectives

3 What Makes us Unique

3 Business Strategy

4 Strategy Alignment and Intergration

4 Our Partners

5 Service Standards

6 Product & Services

7 Used oil Collection
8 Nhluvuko Logistics
9 Nhluvuko Factory supply

10 Shareholders



EXECUTIVE SUMMARY

Nhluvuko Capital is an African centred investment company. A proud domicile company seeking to penetrate the SA investment market for the equal benefit of the shareholders, employees, suppliers and the society. The company endeavours to be heritage of the country. Birthed by Nhluvuko Achievement Shitlhavani in 2016, possessing the idea and desire to transform the society. We strongly believe that businesses are patriotic social forces. Nhluvuko Capital aspires to be a practical example. A company which is destined to achieve extreme greatness through its multi-diversified investments. Nhluvuko Capital is destined to be a success story. We pride ourself for our patriotic approach in addressing key challenges facing our country, unemployment and enviromental challenges.

The decision to start up Nhluvuko Capital did not arrive overnight, but over a series of observations and analytical assessment. Achievement himself is an executive member of the free market foundation Youth. An organization that advocates for entrepreneurship and the growth of SME`s. Shareholders profile..



OUR VISION

Nhluvuko Capital aspires to be a truly entrepreneurial venture which continuously grow its brand and assets through building trust and relationships amongst its stakeholders, and by delivering the expected services to its partners

OUR PURPOSE

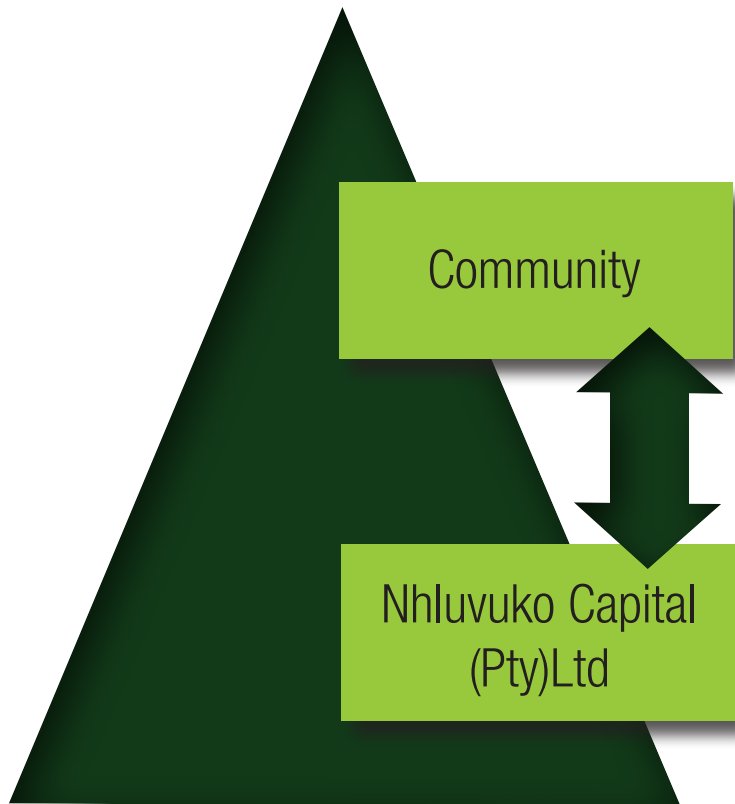
Nhluvuko Capital has a multiple purpose for its operational existence. Despite being vehicle for wealth creation for the shareholders, one of the prominent roles and purpose of Nhluvuko Capital is to add value into communities, through job creation, skills development and directly contributing into environmental sustainability.

OUR OBJECTIVES

The fundamental objectives of Nhluvuko Capital is to create wealth for the shareholders and create decent employment for the young men and woman of South Africa, especially from the previously marginalised communities. Nhluvuko Capital is practically responding to the National Development Plan (Vision 2030) call for entrepreneurship role in creating jobs.



Figure 2



WHAT MAKES US UNIQUE?

Nhluvuko Capital is not just a commercial business seeking only to generate profit and focus only in advancing the interest of the shareholders. Nhluvuko Capital can best be described as a social entity aiming to accomplish both the interests of the shareholders and the society as a whole. Through our stable operations, the company will strive to cooperate with the stakeholders in dealing with socio-economic crisis facing our country, Unemployment, Skills development, Education and poverty in the main. Our organizational philosophy and social ethics aforementioned are what makes us to be fundamental distinct with other organizations.

THE BUSINESS STRATEGY

Strategy is the effective tool which Nhluvuko Capital must implement in order achieve the set objectives. We have devised practical and realistic mechanisms to accomplish our vision. Apart from the traditional and common strategies which Nhluvuko Capital will apply, our unique strategy is to uniquely build relationships and trust with our partners . Nhluvuko Capital endeavours to build strong synergies with partners from various industries. Partnership management is the company`s fundamental strategy. We believe in partnership, we will invest towards building key synergies. Delivering the expected service and beyond to our partners is regarded as the key determinant of Nhluvuko Capital`s success.

Strategy Alignment and Integration

Our strategy will be reinforced by equally valuing of our partners (referring to Shareholders, Staff, Suppliers, Clients, Society, Business sector and government) as prominent component of our success. Nhluvuko Capital decisions will be made after thoroughly considering the environmental impact assessment and economic effects. Nhluvuko Capital is focused on revenue generation and improvement on operational standards in the areas we are venturing at.

Being a social sensitive organization, depending on its growth, Nhluvuko Capital will accelerate the economic transformation process by assisting previously disadvantaged households, by appointing black-deserving professionals with the relevant specialist skills, not excluding other racial groups. We seek to invest by leveraging the following aspects:

- Building Partnerships
- Skilled Employees
- Experience and skills of the shareholders
- Management Skills and Expertise
- Dynamic Networks
- Innovation and Creativity

OUR KEY PARTNERS

We understand that strategic partnership allows business to grow faster. We envisage to be a partner that will add significant value to our partners. The comprehensive graph below is an illustration of the complementary relationship and the significance of Nhluvuko Capital's partners.

The graph shows how equal our partners in terms of value and importance

Nhluvuko Capital: Strategic Partners

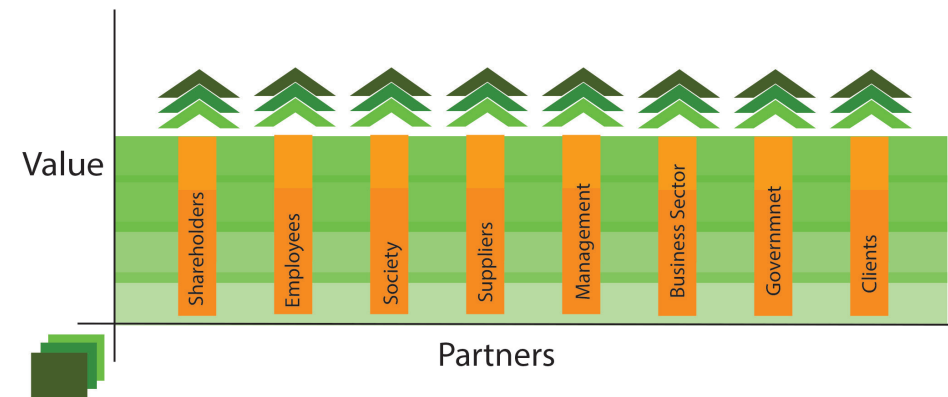


Figure 2



SERVICE STANDARDS

Nhluvuko Capital's greatness is measured by its service delivery standards, partner's perception about us is very important. There are neither small projects or small partners. Every project or partners is given the maximum required attention to meet and exceed the desired expectations. Nhluvuko Capital has tweaked its service delivery standards to be more consultative in order to fulfil the desired results on a client's perspective.

We believe entirely that organizational effectiveness can be primarily achieved through maximum productivity, efficiency and building mutual synergies. Our service execution standards has been designed to fully match the corporate ethics and standards.

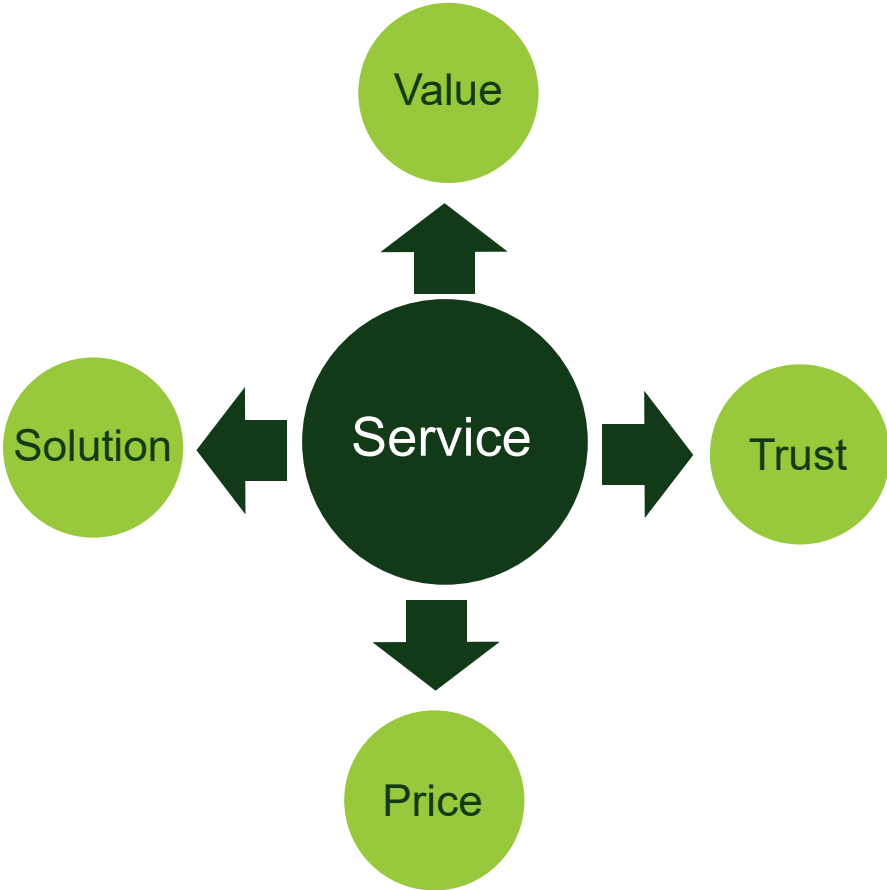
Nhluvuko Capital will continually invest its resources into its operational systems to constantly improving service delivery standards. Our unique marketing strategy is the best service delivery to our client. The below methodology is applied in every single task or service we carry out to our stakeholders /partners.

Figure 3

PRODUCT/SERVICES

Nhluvuko Capital`s services and products are all designed to meet our partners expectations in terms of value, solution, price and trust. The organization`s success will be achieved through the efficient and effective provision of our services to our prospective partners. We understand that each company brand build its reputation mainly based on how it deliver its services and products to its clients.

Nhluvuko Capital does not underestimate the significance of good client service and service quality. Our services seek to deliver the best solution to our partners, we strive to deliver product of higher value, we commit to build trust though providing the best service to our partners, we commit to provide our service at a reasonable price.





USED OIL COLLECTION

Nhluvuko Capital is a patriotic venture which cares about the society, the environment. One of our proud services is the collection of used oil within the industrial areas of Johannesburg and Ekurhuleni. The Used oil is collected for safe disposal to ensure an eco-friendly environment. Nhluvuko Capital is in the process of affiliating with the Rose foundation and Nora. We are currently affiliated to the Gauteng department of Agriculture and Social development as a waste transporter for hazardous and general waste, as well as the Institute Waste Management of Southern Africa. The used division is set to offer solutions to capital intensive companies which utilizes oil for production or maintenance. The storage of waste, used oil in particular has become a challenge for most the companies. Nhluvuko Capital offers the safe solution of collecting used oil into safe disposal units. We supply companies with containers to store in used oil, once they are filled, we come and collect them.

NHLUVUKO LOGISTICS

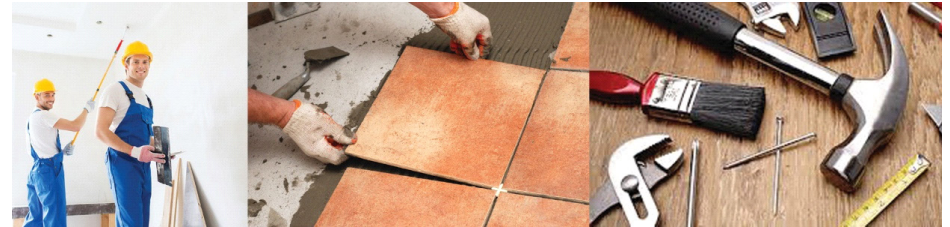
Nhluvuko logistics was created to close the existing gap within the market. Responding to the fast growing SMME'S trend and the new entrants in the commercial sector. Nhluvuko has developed a convenient and cost effective solutions for the clients that are in desperate need of the transportation /logistics services. Our services are tailor-made to suit the needs of both the SMME and corporate clients.

Our approach is not complicated, Just in Time(JIT) is the simple model we are applying to effectively and efficiently deliver our service to our prospective clients. Nhluvuko Capital understands that there are unexpected circumstances which may need to be attended immediately, hence our clients can contact us for our services and deliver the service the same day depending on the distance and availability of our resources. We strive to meet and exceed our client's expectations in all aspects e.g. Rates, and Service quality.



NHLUVUKO FACTORY SUPPLY

This is the organization`s first division to operate. The division`s primary focus is to supply the Cleaning materials, Safety kits, recycling containers, Storage containers, equipment, plastic home and kitchen wares. Our key target markets are community cooperatives, Manufacturing Industries, Nursery Schools, charity organizations.



NHLUVUKO CONSTRUCTION

Our construction division will be focusing on Painting, Tiling and road lane painting. We are planning on soliciting contracts within the established companies in the market. Sub-contracting will enable us to develop our relationships and grow our brands. Our construction projects are unique in terms of quality service and efficiency.

SHAREHOLDER'S PROFILE

A dedicated, a dynamic youth individual, an active citizen, a passionate social entrepreneur, a university of Johannesburg graduate (National Diploma in small business management) and having obtained a Project Management certificate at Wits. Achievement Shitlhavani started Nhluvuko painting and trading in 2007, which had closed subsequently due to financial hurdles.

Achievement Shitlhavani has wealth of business operations experience, now ready to apply the acquired knowledge gained within the corporate sector as well as to convert Nhluvuko Painting and Trading failures into Nhluvuko Capital's success. As the vision bearer, Achievement has decided to take a full responsibility in transforming the company to its fully operational stage from the foundational phase.

It is for the above reason why he is currently sole shareholder in the organization. As when the company grows, Achievement will devise a strategy which will seek to attract valuable partners in the business to partake in achieving Nhluvuko Capital principal and mutual goals. Achievement has a deep interest and passion for economics and politics. Achievement is currently working at JcDecaux Africa as an Account Executive responsible client service management and sales. Achievement is currently doing a BA in International relations and Politics at Wits University.

"I am the product of South Africa's business people - in industry and agriculture, commerce and finance - whose spirit of enterprise has helped turn our country's immense natural resources into the wealth of our nation" Nelson Mandela

